

高速、智能、节能
High Speed, Smart, Energy Saving

SO WE FOCUS ON

- 1** Integrated Advantage Industrial Chain
- 2** Reduce The Cost
- 3** Improve Our Quality
- 4** Better Service



- 二十多项专利核心技术
- 高度自主知识产权的高科技产品
- 性能及各项质量指标均达国际标准
- China's High-tech Enterprise
- We had 20 Sets Patent of our own Products

台州市黄岩凯普机械有限公司
TAIZHOU HUANGYAN KAIPU MACHINERY CO., LTD

浙江·台州·黄岩澄江街道河曲路18号 0086-576-84214118
No 18 HeQu Road, Chengjiang, Huangyan Taizhou, Zhejiang, China
www.cap-china.com kaipu@cap-china.com



KAIPU®

国家高新技术企业
塑料瓶盖压塑成型解决方案
LOW MAINTENANCE COST
SIMPLE OPERATION

53000PCS/H
Continuous Compression Molding



台州市黄岩凯普机械有限公司
TAIZHOU HUANGYAN KAIPU MACHINERY CO., LTD

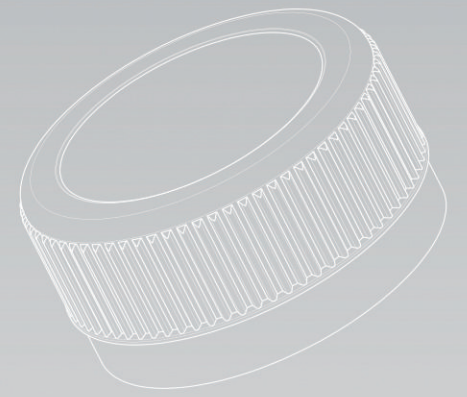
ONE-STOP BOTTLE CAP MANUFACTURING SOLUTION

一站式瓶盖解决方案

CCM (compression technology) is Kaipu's response to the needs of the global closures industry. It's a solution that offers the lowest running costs on the market and a series of intrinsic advantages, from reduced cycle times to high productivity and low consumption, from weight reduction to the ability to control every single mould cavity by setting its parameters directly on the operator interface and checking, in real time, output quality.

CCM (压缩技术) 是凯普对全球瓶盖行业需求的回应。提供市场上最低运行成本和一系列内在优势的解决方案，从减少循环时间到提高生产率和低消耗，从减轻重量到能够通过直接在操作员界面上设置参数并实时检查输出质量来控制每个模腔。

20 项专利引领
技术创新
We had 20 Sets Patent of our own Products



PLASTC CLOSURES TURN-KEY PROJECT 瓶盖制造解决方案

Bottle Neck	PCO1810 1-start	PCO1881 1-start	PCO1881 1-start Hotfill	PCO1881 1-start	30/25 3-start	29/25 3-start	26mm	37mm 2-start	38mm 3-start
Article	1810 CSD	1881 CSD	1881 Hotfill	1881 Light	30/25	29/25	26mm X-Light	37mm 2-start	38mm 3-start
Material	PE-HD	PE-HD	PE-HD	PE-HD	PE-HD	PE-HD	PE-HD	PE-HD	PE-HD
Weight	2.70gr.	2.30gr.	2.20gr.	2.0gr.	1.85gr.	1.20gr.	0.90gr.	2.90gr.	2.90gr.



Advantages 优势



1 High production capacity 20% -40% (KP-24H) 产能高 20%-40%(KP-24H)

- M30/25≥28,000 pcs/hour
- M29/25≥ 30,000 pcs/hour
- M1881 ≥ 20,000 pcs/hour
- Digital sequential start-up, round-the-clock production
- 数字化顺序启动, 全天候生产

2 Double pressure oil circuit 双压力油路

- 高压力0.1秒快速---成型
- 低压力低噪音 ---分型
- 油缸杆中心冷却 --高寿命
- High pressure 0.1 seconds fast --- molding
- Low pressure and low noise --- type
- Cylinder rod center cooling - high life

3 Oil cylinder rod 油缸杆

- 632 Material HRC 49-51
- High-gloss grinding + ADLC coating
- 632材料HRC 49-51
- 高光研磨+ADLC涂层

4 Melt distribution 融料分配

- Compressed air and piston movement with extremely low energy consumption, precise feeding, no jumping
- The height of the scraping blade is adjustable, the scraping material is uniform, and the grammage error is small
- 能耗极低的压缩空气和活塞运动, 精准投料, 不蹦料
- 刮料刀片高度可调, 刮料均匀, 克重误差小

5 Main Axis 主轴

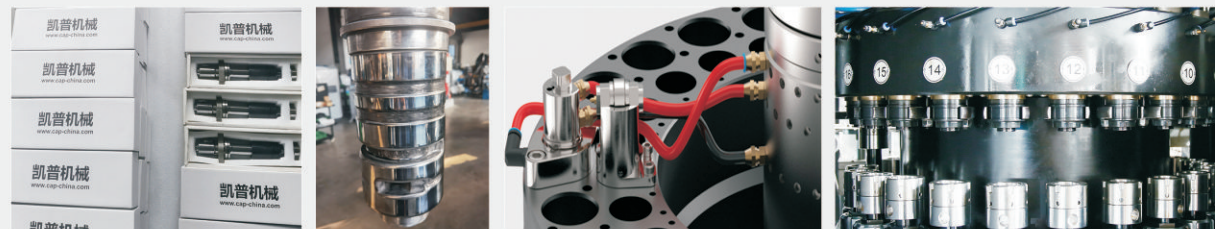
- Spindle high-strength composite HRC42-45
- High-tech composite coating, anti-rust, wear-resistant and pressure-resistant
- Five-axis high-precision machining center
- 主轴高强度复合材料HRC42-45
- 高科技复合涂层, 防锈耐磨耐压
- 五轴高精度加工中心

6 Maintenance 保养

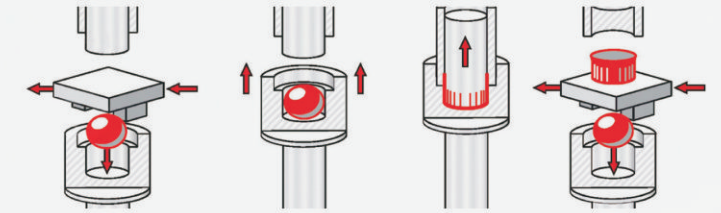
- 上下模具彻底分开, 不伤肢体
- 液压站断电状态保养, 安全可靠
- 点动控制转盘, 单人化操作
- The upper and lower molds are completely separated without damaging the main body
- Maintenance of hydraulic station in power failure, safe and reliable
- Jog control dial, single operation

7 Without reversing valve "0"换向阀

- Circumferential large bore oil circuit distribution, low shear heat, low oil temperature
- Patented invention of rotary switching oil circuit, fast speed, long life
- Hundreds of parts in one for lower failure rates
- 周向大孔径油路分配, 低剪切热, 油温低
- 发明专利的旋转切换油路系统, 速度快, 寿命长
- 上百个零件化为一体, 故障率更低

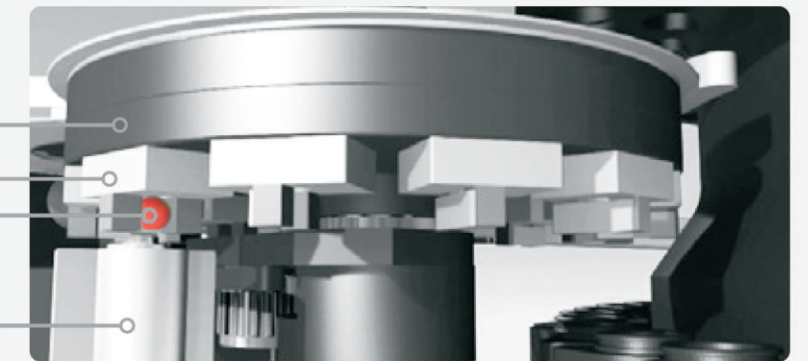


Process 工艺



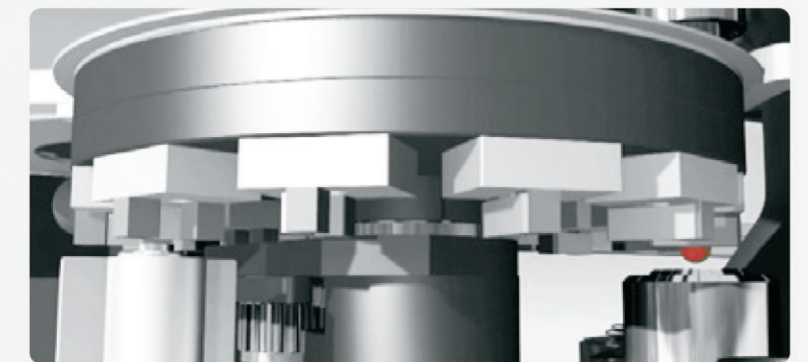
CUTTING AND INSERTING CAROUSEL
刮料和投料转盘

CUTTING AND INSERTING EQUIPMENT
刮料和投料设备

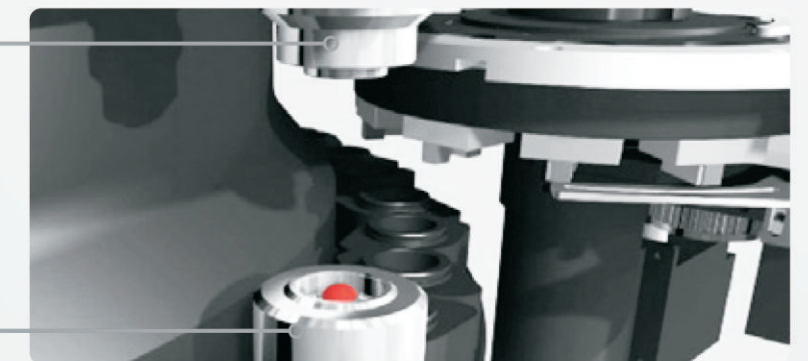


PELLET OF MELTED POLYMER
聚合物塑化单元

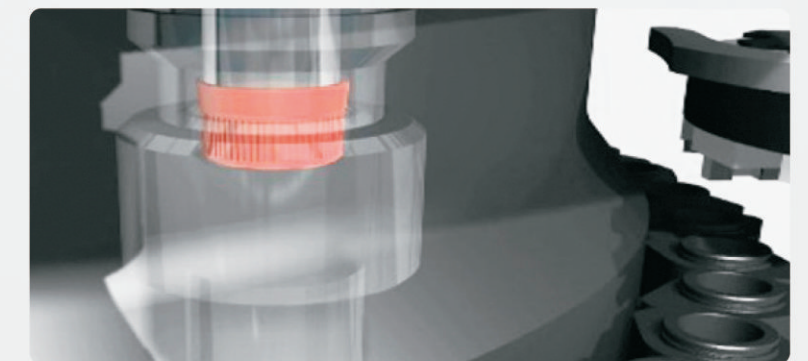
MELT NOZZLE
喷嘴



UPPER MOLD
上模



LOWER MOLD
下模



Technical data 技术参数

产品型号 Model	单位 Unit	KP-16H	KP-24H KP-24S	KP-36H KP-36S
腔数 Number of cavities	腔 Cavities	16	24	36
最大产量(3025/1.85g) Maximum output (3025/1.85g)	个/时 Pcs/hour	18000	30000	46000
最大产量(2925/1.35g) Maximum output (2925/1.35g)	个/时 Pcs/hour	19000	32000	52000
最大产量(38mm不折边-3g) Maximum output (38mm unfolded - 3g)	个/时 Pcs/hour	13800	18000	28000
最大产量 (1881-含气折边2.4g) Maximum output (1881 - gas-bearing hem 2.4g)	个/时 Pcs/hour	13000	20000	30000
瓶盖直径 Cap diameter	mm	18-42		
瓶盖高度 Cap height	mm	10-25		
电压 Voltage		380V/50Hz		
液压电机 Hydraulic motor	kw	18.5	22	37
挤料电机 Extrusion motor	kw	11	15	22
转盘电机 Turntable motor	kw	3	4	5.5
加热圈 Heating ring	kw	20	23	36
装机功率 Installed power	kw	52.5	64	100.5
2925为例实际功率约 2925 as an example of real power	kw	28	38	56
气源 Air source	m ³ /min 8bar	0.8	1.2	1.5
尺寸 Size	m	3.4*1.7*2.2	3.6*1.8*2.2	4.5*2.2*2.2
重量 Weight	t	3.5	5.5	9

• 所有详细参数和设计根据客户需求 Note: All Specifications and designs are subject to Customers needs

• 实际产量根据盖子的形状和克重而定 Actual output depends on Caps Shape and weight

Mould unique advantage

1. Material

Adopt professional cap mold steel which has excellent wear resistance, corrosion resistance and polishing of optical activity, good machinability, and quench stability. Braces with high hardness, high wear resistance of the alloy steel, not easy to burn.

2. Hardening

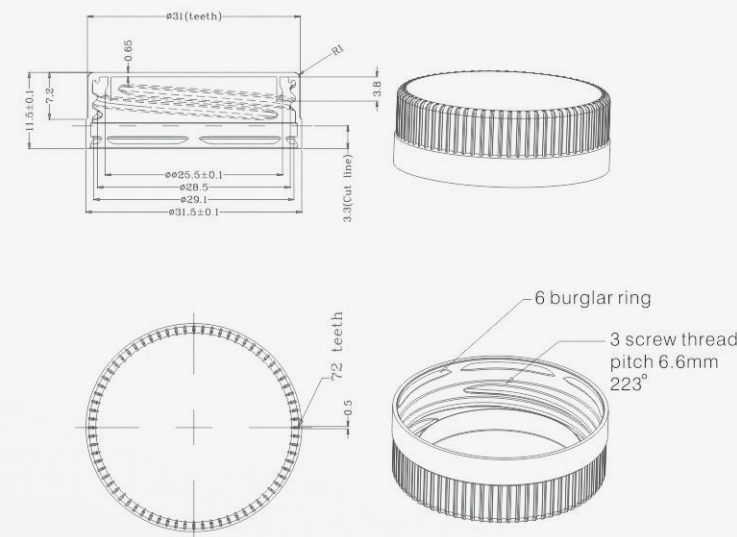
We choose Sweden company to process the hardening heat treatment, the rockwell hardness can reach 51-55HRC. Strict on mold material, appearance, deformation degree, hardness and so on when process, and fully guarantee the quality of cap mold hardening.

3. Coating

Cap mould specified coating by Swiss company, the coating thickness of thin steel, strong bonding force, high hardness, low friction and wear reducing, can effectively extend the use life of the mold 2-6times.

4. Precision

All the molds processed by Foreign CNC centre, the final accuracy generally reached 2-3um, can effectively meet the requirements of size tolerance bottle, jeepine's mold, can achieve the requirements of exchange. Features between injection molding and compression molding



配件名称 Name of the accessories	品牌/原产地 Brand/Country of origin
脱模套 Sleeve	德国2344 GERMANY GRODITZ
螺纹 Screw	德国2344 GERMANY GRODITZ
型腔 Cavity	瑞士S136 SWENDEN ASSAB
中心顶杆 Inner core	铍铜 beryllium copper
涂层 Coating	瑞士ALTIN+DLC swenden lonbond
油缸密封圈 Oil cylinder seal	英国 British Hallite

